



Valuable Research from Allied Development Corp.

# *Interactive Knowledgebase*

## *For Contract Manufacturing and Packaging of Food*

*Part of the SavvyPack™ Interactive System from Allied Development Corp.*

Outsourcing to companies that provide contract manufacturing and/or packaging services is a fast growing packaging trend. **Private Label Manufacturers** and **Contract Packagers** provide the majority of these services. This Knowledgebase provides searchable information on companies that provide contract manufacturing and/or packaging of food products.

Food **Contract Packagers** provide a wide variety of services including filling the package, logistics, package design, product development, component purchasing, client-site production, club store packaging, and many more.

Private label food products are growing significantly in variety and volume. **Private Label Manufacturers** can formulate the products, design the graphics and packaging, perform all the processing and manufacturing, and ship products to the marketplace.

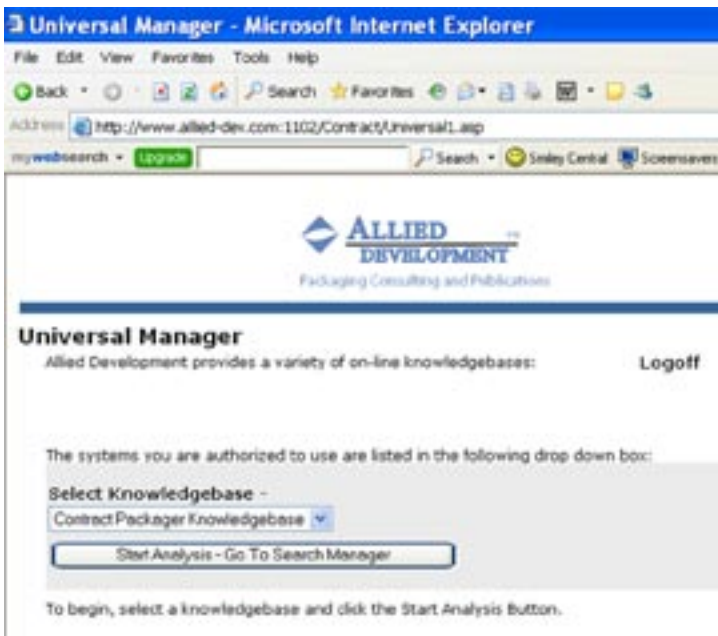
You can search the Knowledgebase by word, phrase, or pre-defined criteria. Detailed company profiles are displayed that match the desired criteria.

For further details or a product demonstration, please contact Allied Development at 1-952-898-2000.

[www.allied-dev.com](http://www.allied-dev.com)

This **Interactive Knowledgebase** is a proprietary database that includes all companies that contract manufacture and/or contract package food in North America. The majority of entries are **Private Label Manufacturers** and **Contract Packagers**. To date the knowledgebase includes detailed information on more than **370** companies and is continually being updated.

The company profiles in this Knowledgebase contain many information categories including company size, ownership, location, phone numbers, product services, product development capabilities, product areas of focus, processing capabilities, machinery systems, and more.



The Universal Manager is the first screen you see after logging in to the system. On this screen you select the Knowledgebase you wish to enter.

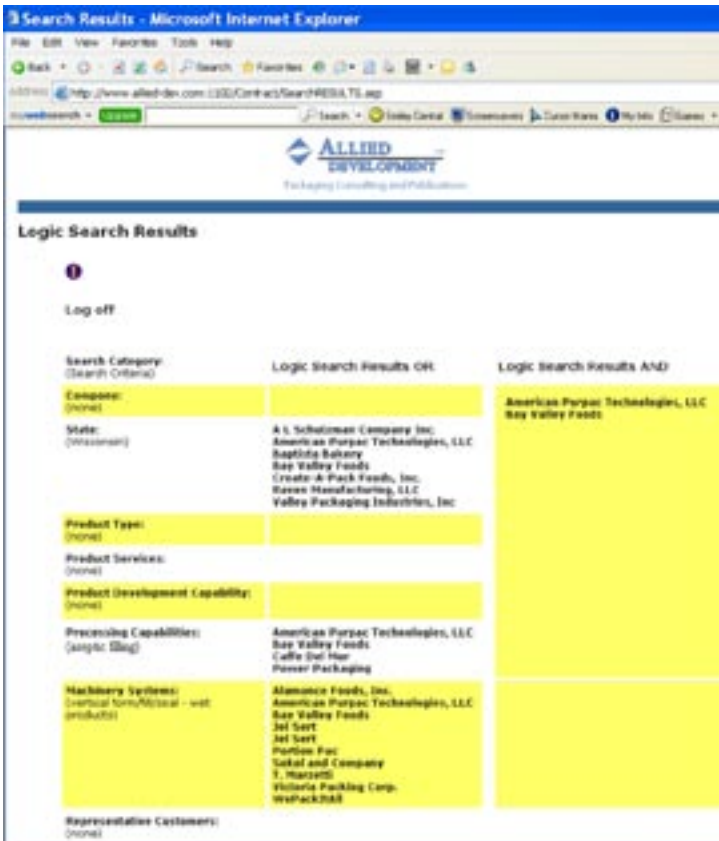
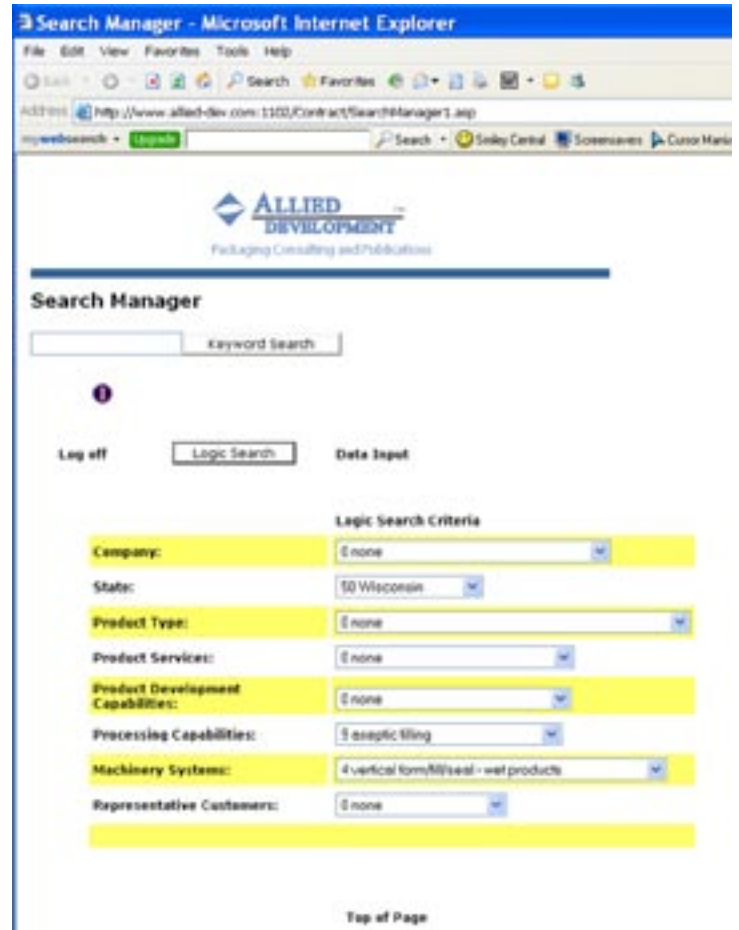
You use the Search Manager to initiate your search. You can search by keyword or by specific criteria.

In the example shown on the right, the criteria selected were:

State - Wisconsin

Processing capabilities: Aseptic

Machinery System: - Vertical form/fill/seal - wet products



The Search Results screen displays each company that matches the criteria entered in the "Logic Search OR" column. If any company matches ALL of the criteria entered, they are displayed in the Logic Search Results AND column. In the example shown on the left several companies met one of the individual criteria, but only TWO companies met ALL of the criteria

# Typical Profile Display



RYTWAY Packaging Corporation  
21850 Grenada Ave.  
Lakeville, Minnesota 55044  
United States  
952-469-1417  
[www.rytway.com](http://www.rytway.com)

<b>Ownership</b>	Wind Point Partners David Finch CEO Larry Muma COO Mary Beth Fong CFO
<b>Annual Sales</b>	US\$0
<b>Product Areas</b>	cereals - hot or cold, snacks, dinner kits, cookies/rte, microwave popcorn, coffee/tea, drink mixes - powdered hot and cold, flour based mixes - cake/cookie/desert/other, pasta - dry products,  <b>Comment:</b> Cereal products and many others are shipped to their plant sites in bulk containers for final packaging.
<b>Product Services</b>	club store packaging, food service, kitting - gift packages and others, retail consumer packaging,  <b>Comment:</b> none
<b>Product Development Capability</b>	research and development staff, formulation, package development, sourcing ingredients, sourcing packaging materials, private label products,  <b>Comment:</b> none
<b>Processing Capability</b>	dry ingredient mixing, bulk handling - ingredients, free flowing products, cooking/heating ingredients,  <b>Comment:</b> none
<b>Packaging Machinery Systems</b>	horizontal form/fill/seal - dry products, vertical form/fill/seal - dry products, horizontal wrapper, bottle filler - glass/plastic, can filler - also cup and cannister,  <b>Comment:</b> Brand names on their equipment include Bartelt, Hayssen, Holomatic and Laudenberg.
<b>Quality Control Capabilities</b>	Moisture analysis, oxygen and all product analysis specified by their customers.
<b>Inspection Certification Services</b>	AIB, Kosher and USDA.
<b>Plant Locations</b>	Lakeville, MN (3 sites)
<b>Representative Customers</b>	Campbell's Soup Co., General Mills, Con Agra, Kraft,  <b>Comment:</b> none
<b>Commentary</b>	RytWay was established in 1965 and today focuses on the food industry and more specifically only on top tier food manufacturers. It has 60 packaging lines that can produce a wide variety of package styles. These include shaped stand-up pouches, with or without fitments, plastic cups and bowls, nitrogen flushed pouches and bags of many styles and constructions along with the necessary cartoning systems. They contract produce popcorn for their microwave bag customers and can manufacture 300 million bags/year. They have full procurement capability to source any ingredient and packaging material required.
	Copyright © by Allied Development Corp.

# Contract Packaging Interactive Knowledgebase

## Subscribe Five Ways from Allied Development Corp.

CALL 1-952-898-2000

FAX Completed order form to:  
1-952-898-2242

ONLINE [www.allied-dev.com](http://www.allied-dev.com)

EMAIL [sales@allied-dev.com](mailto:sales@allied-dev.com)

MAIL Completed order form to:  
Allied Development Corp.  
17689 Lake Oak Circle  
Lakeville, MN 55044-5211  
U.S.A.

### Subscriber

Name \_\_\_\_\_

Title \_\_\_\_\_

Company Name \_\_\_\_\_

Street Address \_\_\_\_\_

City \_\_\_\_\_

State/Province \_\_\_\_\_

Country \_\_\_\_\_

Zip/Postal Code \_\_\_\_\_

Telephone \_\_\_\_\_

Fax \_\_\_\_\_

E-mail \_\_\_\_\_

Web Site \_\_\_\_\_

### Payment Information

#### Contract Packaging Knowledgebase

\_\_\_\_\_ @US\$795 Per License (annual) .....\$ \_\_\_\_\_

TOTAL .....\$ \_\_\_\_\_

### Payment Method

- Payment Enclosed (Payable to Allied Development Corp. in U.S. funds on a U.S. Bank)
- Charge my credit card
- VISA     MasterCard     American Express

Card number \_\_\_\_\_ Expiration date \_\_\_\_\_

Name on card \_\_\_\_\_

Signature \_\_\_\_\_

